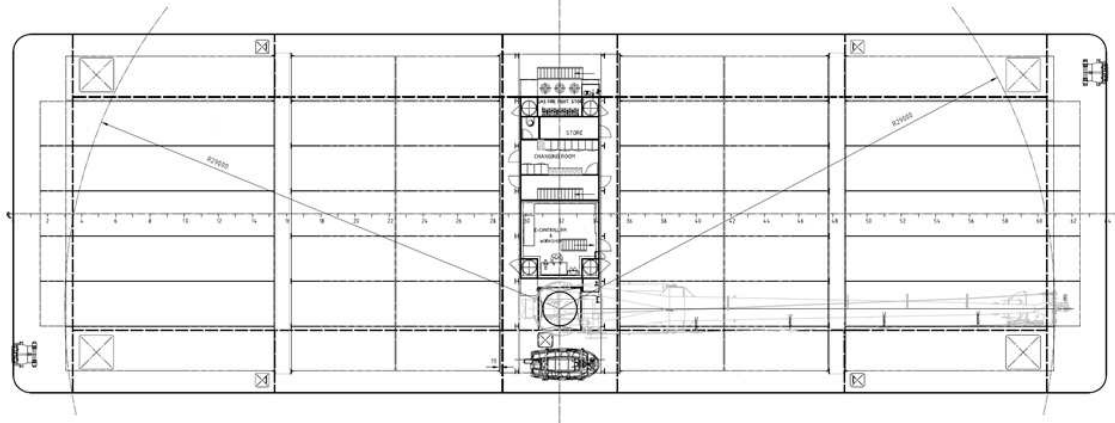
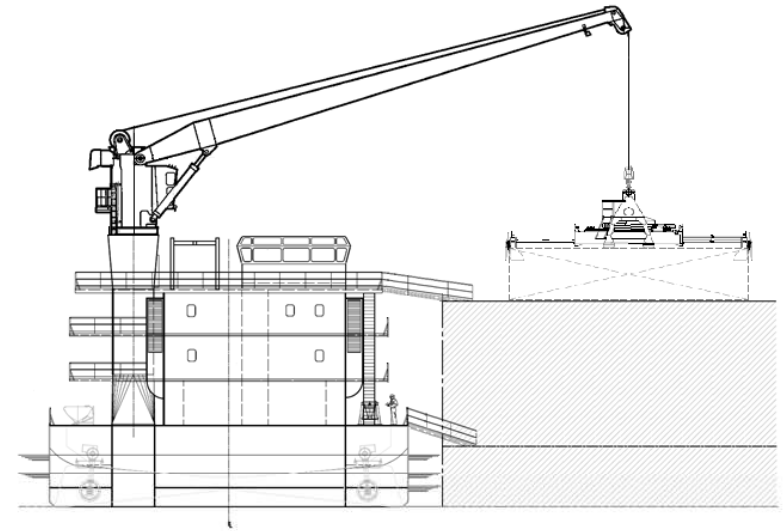
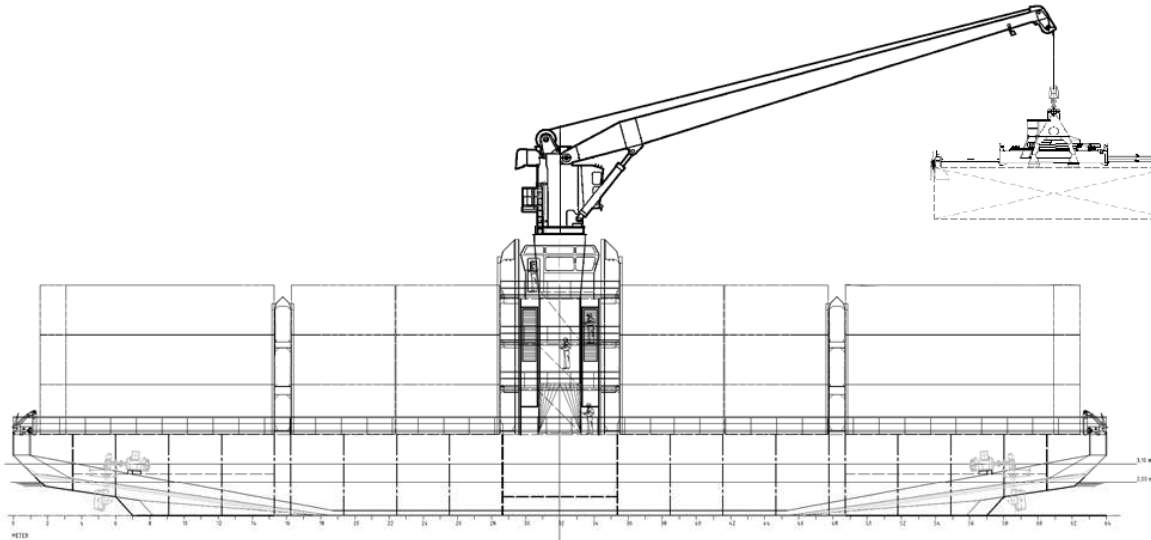


PORT FEEDER BARGE - Main Particulars



Type: Self propelled, double ended, self sustained container barge

Length o.a.	64.0 m
Breadth moulded	21.2 m
Depth	4.8 m
Draught (seagoing)	approx. 2.0 m
Draught (inland)	approx. 3.1 m
Deadweight (seagoing)	approx. 1,000 t
Deadweight (inland)	approx. 2,500 t

Container capacity	168 TEU (14 reefer plugs)
Stack load	75 t (20ft), 90 t (40ft)

Crane capacity	49 t @ 27.0 m
	39 t @ 29.0 m
Spreader	Fully automatic, telescopic, turning device, overheight frame

Propulsion (diesel electric)	4 x rudder propeller (4 x 280 kW)
Speed	7 knots (at 3.1 m draught)

Design concept by (international patents pending):

10/2018



PORT FEEDER BARGE
Geschäftsführer / Managing Director:
Dr.-Ing. Ulrich Malchow

Grosse Elbstrasse 42 · 22767 Hamburg · Germany

www.portfeederbarge.de

Tel.: + 49 / (0)40 / 401 6767 1

E-Mail: info@portfeederbarge.de